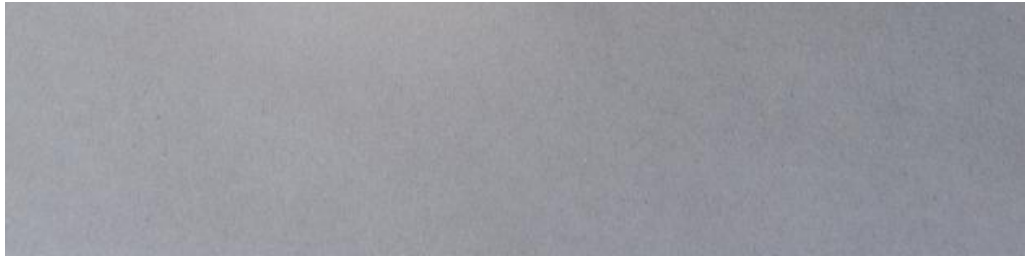


# Object Summary



# Object Summary



## **Carved and Painted Wooden Mask of Sidakarya Putih**

19th century

Bali, Indonesia

Wood, polychrome pigments, metal hardware, hair

Overall: 7 1/2 × 7 3/4 × 3 3/4 in. (19.1 × 19.7 × 9.5cm)

Topeng is a form of Balinese theater in which one actor may be responsible for portraying multiple characters throughout the story.

Actors change their masks throughout the performance, accompanied by ritual purifications or symbolic switching from character-to-character. The character of Sidakarya Putih concludes the performance of topeng. His character is performed at various religious festivals as it is believed he can ward off malevolent spirits and invite benevolent ones.