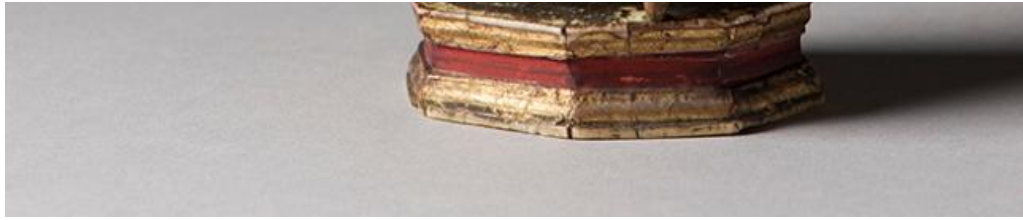


Object Summary



Object Summary



Gold and Gem-Set Carved Ivory Figurine of a Nobleman with Flower and Sword

19th century

India

Mughal

Ivory, pigments, gold, seed pearls, gemstones

Overall: 7 1/16 x 2 3/8 x 2 1/8 in. (17.9 x 6 x 5.4cm)

This figurine of a nobleman is dressed in the splendor fitting of the Mughal court. His long coat, called a jama, is painted with delicate floral motifs and cinched at the waist with a patka or sash. A turban is wrapped around his head, and a necklace with a large pendant and strings of pearls hang around his neck. He holds a flower in one hand and a sword in the other. Accessories such as elaborate jewelry and ceremonial weapons were commonly worn in court. The Mughal's ancestors, the Timurids, wore clothing derived from Turkish, Persian, and Central Asian styles. These nomadic people adapted their style to suit the much warmer climates and local materials of the Indian subcontinent.