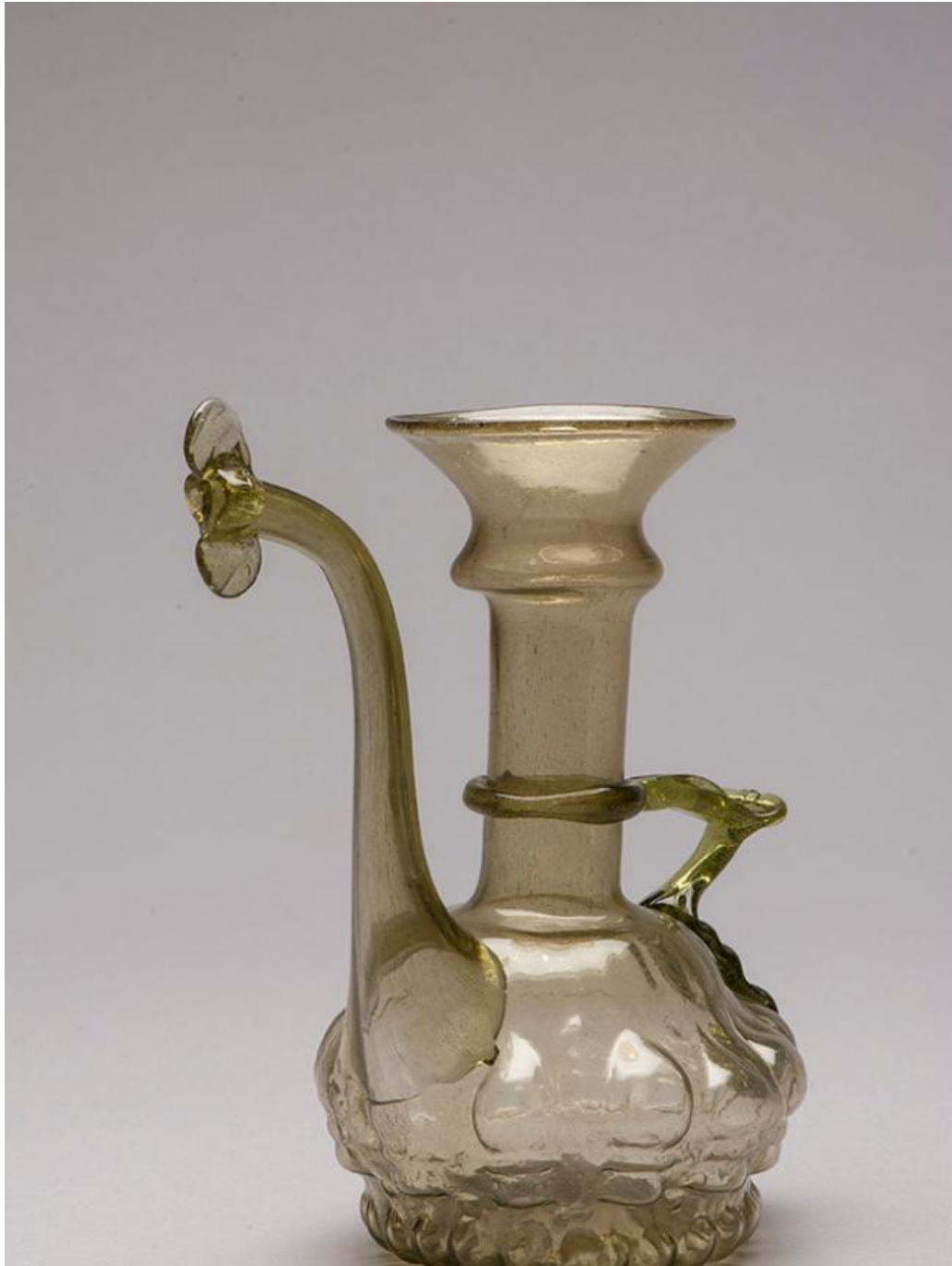


# Object Summary



# Object Summary



## **Yellow-Green Blown-Glass Ewer with Applied Decoration**

19th century

Iran (Shiraz)

Qajar

Colored glass

Overall: 6 7/8 x 5 3/4 in. (17.5 x 14.6cm)

This yellow-green glass ewer, called an *āftāba*, has a globular body and delicately applied handle and spout, which ends in a butterfly-like embellishment. Its spout and looped handle curve gracefully. The body of the ewer is decorated with repeating almond-shaped designs resembling stylized cypress trees. Vessels such as these were created using three-part molds; when the molten glass was blown into the mold, the glass assumed its shape and created the relief decoration on its surface. This ewer was created in Iran in the 1800s. This type of delicate molded vessel was often prominently displayed in decorative niches within private residences and public buildings in the Persian cities of Tehran, Isfahan, and Shiraz.