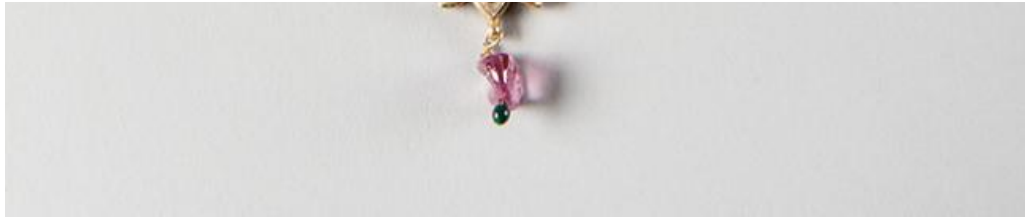


Object Summary



Object Summary



Rose-Cut Diamond Necklace with Ruby, Pearl, and Enamelled Gold Floral Ornamentation

19th century

India (Delhi)

British India/Princely States

Enameled gold, diamonds, pearl, ruby, glass beads

Overall: 9 3/4 in. (24.8cm) Other (pendant with stone): 1 1/2 x 2 1/2 in. (3.8 x 6.4cm)

This necklace is composed of dense rows of diamonds mounted using the kundan technique in which the stones are fastened with strips of pure gold. In traditional Indian jewelry design, diamonds and other precious gems were cut in a manner that preserved their natural size and shape, rather than styling them into multi-faceted shapes like the Western fashion. The finest diamonds, known for their subtle pink, white and green hues, originated in the Golconda mines of the Deccan plateau. Before diamonds were discovered in Brazil in the 1700s, the Indian subcontinent was the world's only source of diamonds.