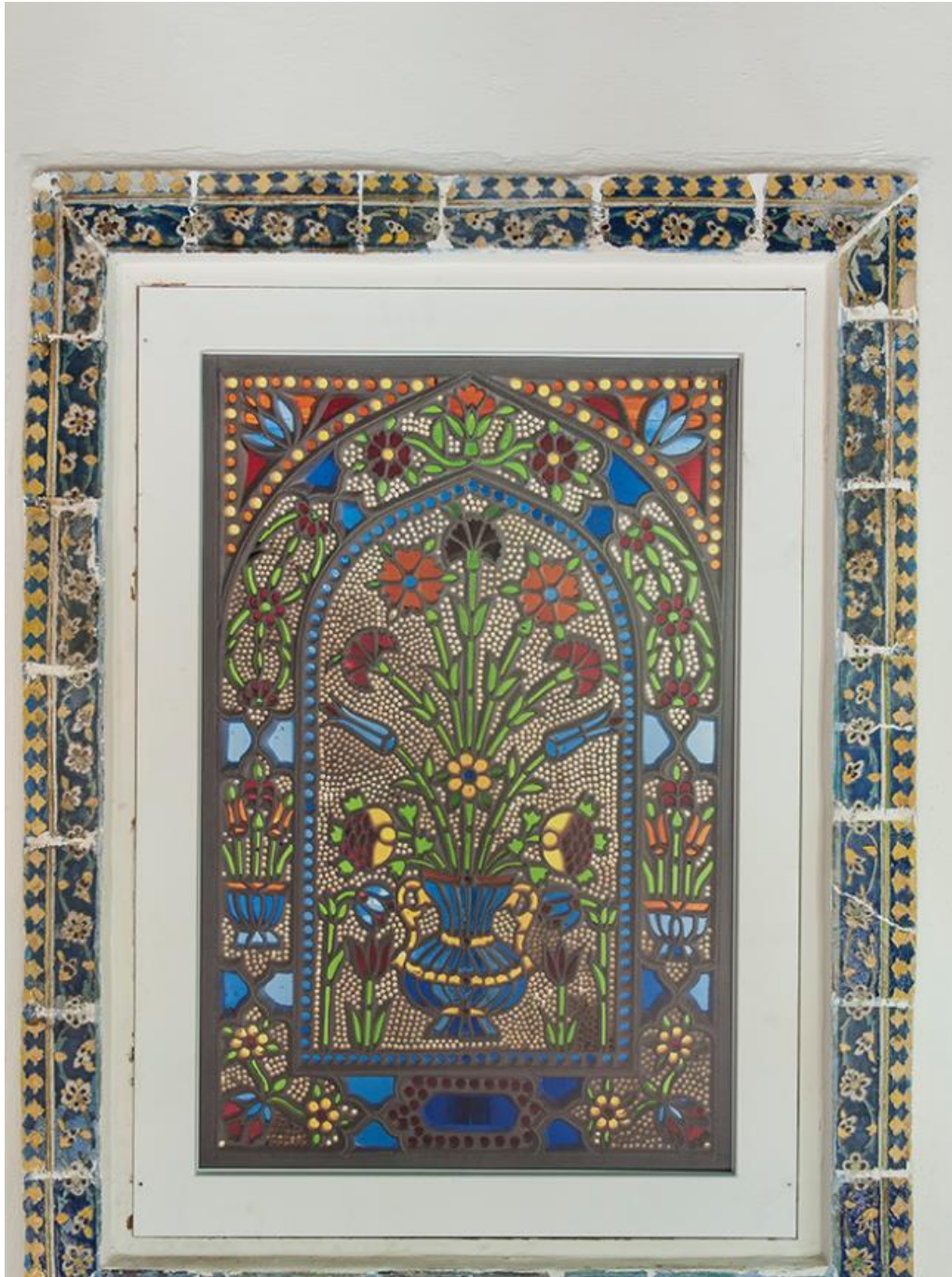


Basic Detail Report



Basic Detail Report



Title Replica of Plaster and Polychrome Glass Window with Floral Vase Motif

Date 20th century

Medium Colored glass, plaster

Description The eight brightly colored stained glass windows lining the upper walls of the courtyard are replicas of an original Ottoman window located in the foyer of Shangri La. This type of window, called a qamariya in Arabic, was created in Syria, Egypt, or Turkey during the rule of the Ottoman empire. The design of a vase overflowing with blue tulips, red carnations, and yellow peonies was a typical Ottoman motif. The vase sits within an arched niche lined with two smaller vases and floral designs connected by intertwining stems.

Dimensions Plaster (visible): 47 1/8 x 31 1/4 in. (estimated inside frame: 1-1 1/4") Plaster (thickness): 1 1/8 - 1 3/8 in.