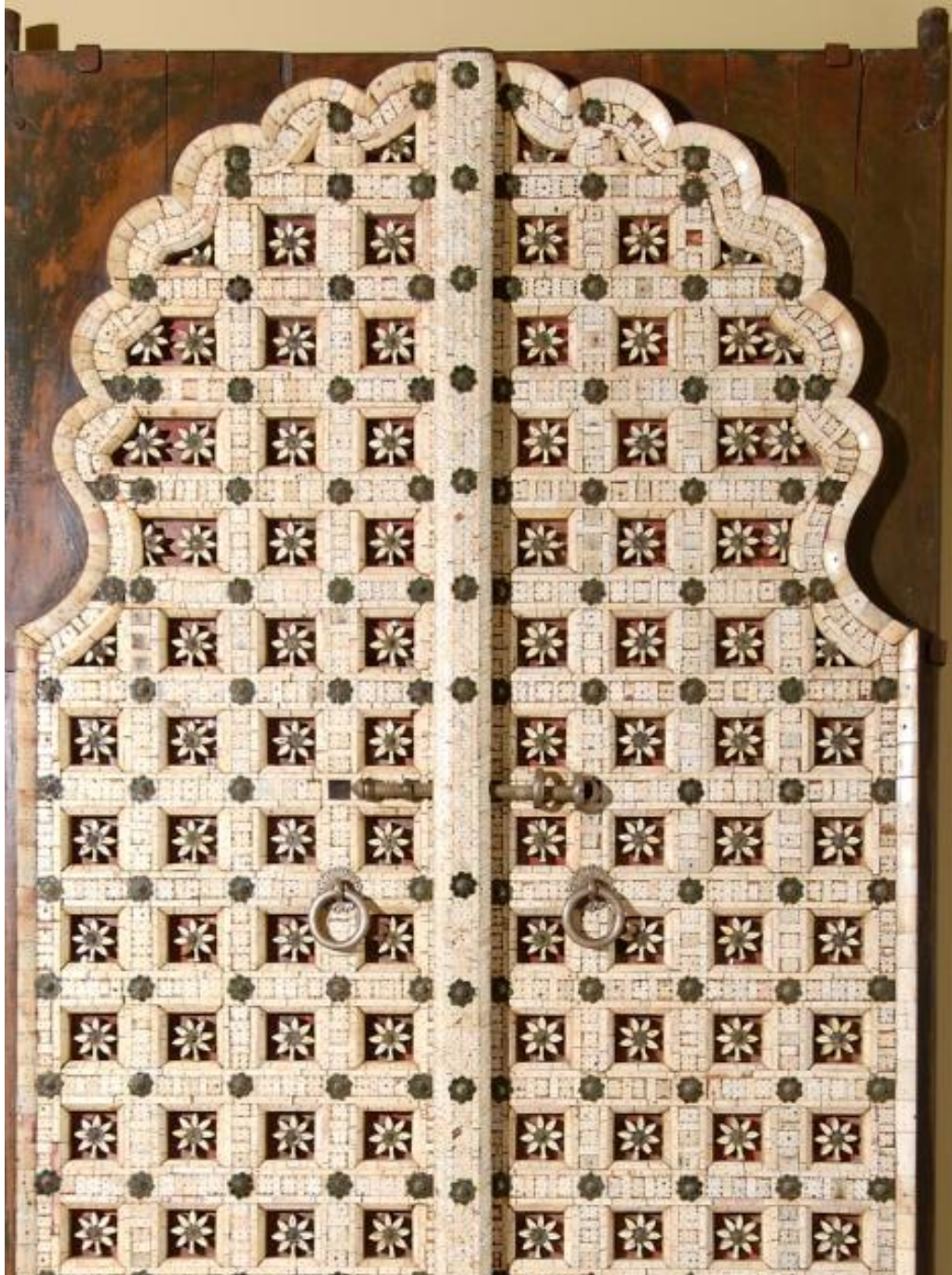


Basic Detail Report



Basic Detail Report



Title Carved Wooden Door with Niche-Shaped Ivory Panels with Floral Motifs

Date 18th-19th century

Medium Wood, ivory, enamel, pigments, mica, metal hardware

Description This set of double doors is set with ivory panels in the shape of a multi-cusped arch. The panels form rows of six-petaled flowers, inlaid with ivory and mica. These doors were created in Gujarat, a state on the western coast of India. As early as the 1400s, Gujarat was the center of wood carving in India. This traditional craft was incorporated into every element of architecture, including facades, balconies, doors, and columns. During the rule of the Mughal dynasty, local traditions were absorbed into

Basic Detail Report

the Mughal aesthetic. For example, the semicircular, cusped arches (seen in the silhouette of this door panel) found in Gujarat and Delhi were incorporated into Mughal architecture.

Dimensions Each door: $84 \frac{3}{4} \times 22 \frac{1}{2} \times 5$ in. (215.3 x 57.2 x 12.7 cm)