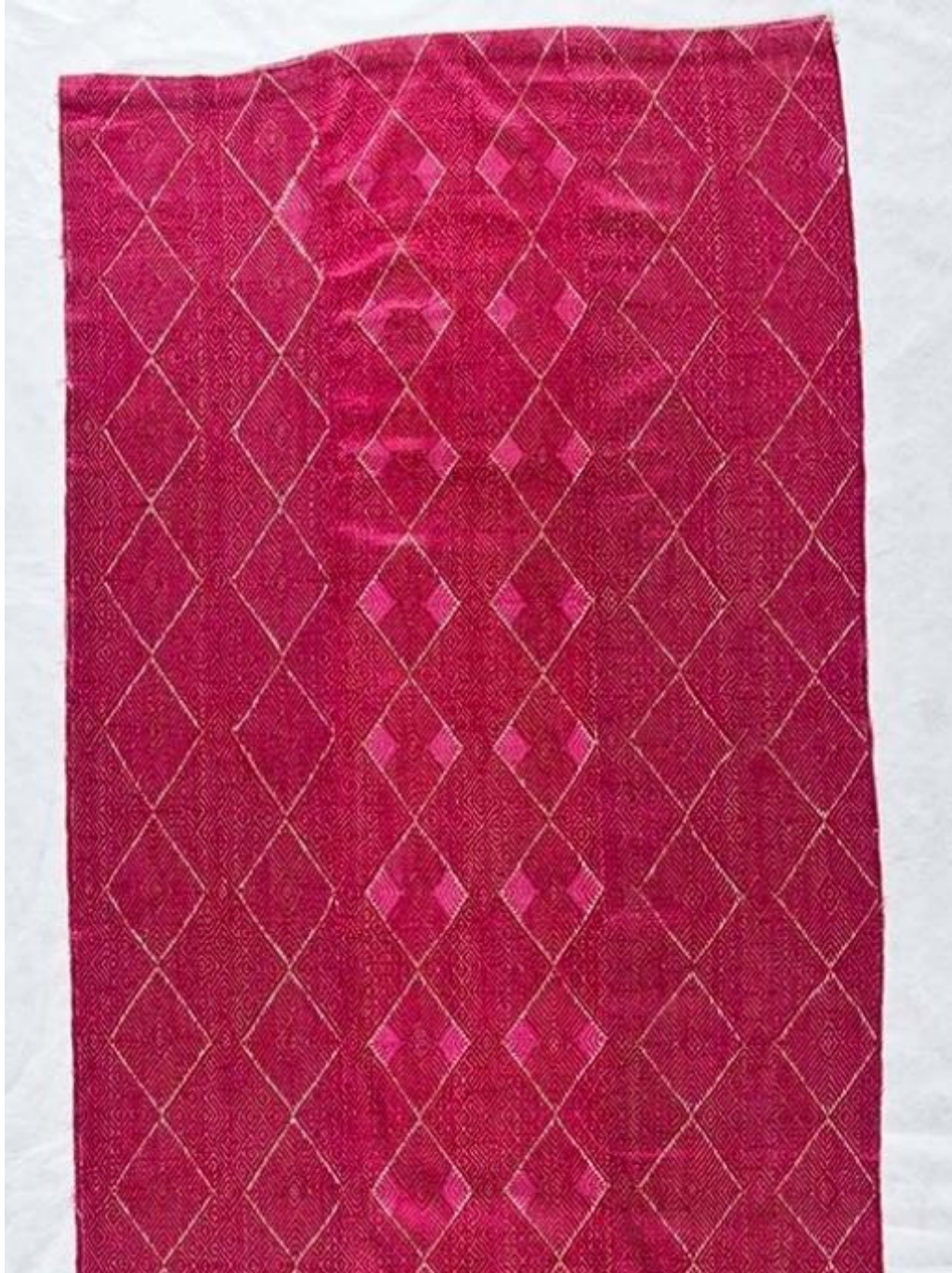


Basic Detail Report



Basic Detail Report



Title Embroidered Silk Shawl (Phulkari) with Diamond Lattice Motif

Date 20th century

Medium Cotton with floss silk

Description This silk shawl, or phulkari, is densely embroidered in a lattice pattern with red, silk thread on white, cotton cloth. This type of embroidery was created by women from the Punjab region of modern day northern India or the Punjab region of Pakistan. Translated from Sanskrit, the word phulkari means “floral work” from phul (flower) and kari (work). Using a darning stitch on the reverse of the fabric, women embroidered intricate patterns using shimmering, brightly-colored silk threads called pat on strips of rough cotton cloth called khadar. The strips of cloth were sewn together and dyed with natural materials such as madder-red (*rubia tinctoria*), which produces red, brown, and maroon colors. Postcolonial

Basic Detail Report

interest in Indian craft changed the consumption and creation of phulkaris. Following international exhibitions in Europe and North America, phulkaris were increasingly exported to London and New York where they were used as “exotic” household furnishings, such as curtains or piano covers. To meet this demand, both women and men participated in phulkari production.

Dimensions Overall: 42 x 97 in. (106.7 x 246.4cm)