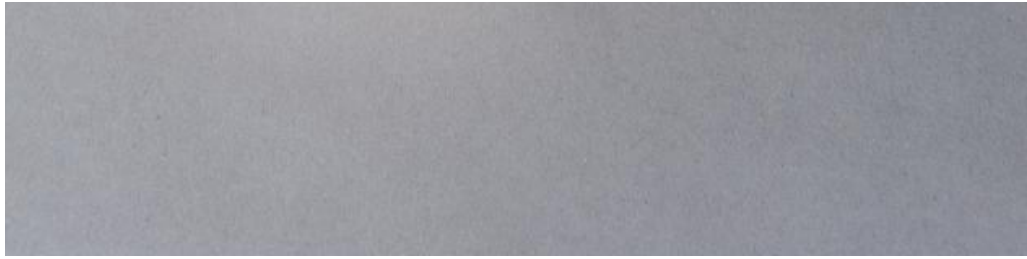


# Basic Detail Report



# Basic Detail Report



## **Title Carved and Painted Wooden Mask of Sidakarya Putih**

Date 19th century

Medium Wood, polychrome pigments, metal hardware, hair

Description Topeng is a form of Balinese theater in which one actor may be responsible for portraying multiple characters throughout the story. Actors change their masks throughout the performance, accompanied by ritual purifications or symbolic switching from character-to-character. The character of Sidakarya Putih concludes the performance of topeng. His character is performed at various religious festivals as it is believed he can ward off malevolent spirits and invite benevolent ones.

Dimensions Overall: 7 1/2 × 7 3/4 × 3 3/4 in. (19.1 × 19.7 × 9.5cm)